

MISSION STATEMENT

To strengthen the community through counseling, education and support to children, youth, adults, and families in North King and South Snohomish Counties.

CENTER FOR HUMAN SERVICES 2007 ANNUAL REPORT

Dear Community Members:

On behalf of the Board and the Staff of CHS we are proud to present to you our 2007 annual report. We are very pleased to report that CHS continues to set a standard for excellence in everything it does, is expanding services strategically, and is poised to become a national leader in the provision of integrated family services.

In the arena of service delivery, we continued to deliver our traditional core services in the Northend at or above the levels we provided in previous years. ***CHS was the recipient of two prestigious awards from King County in 2007. One is the "Science to Service Award" for our help in the county-wide implementation of a new substance abuse assessment tool and the other is the Exemplary Service Award for Direct Services. We are honored by the recognition of our exceptional services.***

Also in 2007 we began implementation of our new Loving Families Program, which will provide comprehensive education and support services to over 800 couples and families over the next few years. The educational workshops component of Loving Families is built around a curriculum developed by Doctors John and Julie Gottman, who are world renowned for their research regarding couples' relationships. CHS was chosen as one of eight sites around the country to participate in this federal research project to test the effectiveness of programs such as this with low income couples. CHS has been adding staff, technology capacity and other infrastructure to support the program.

In addition, CHS purchased a house just a few blocks from downtown Bothell that will serve as our new Northshore Family Center and home for the Northshore component of our Loving Families Program. Board member (and Windermere agent) Lori Knuckey helped us find the site and make the transaction; the Home Depot Bothell store donated materials, supplies, and extensive volunteer hours to build a new deck, fence, and landscape the new property; and King County Councilmember Bob Ferguson assisted

CHS in securing funds to perform a major remodel of the inside of the building. Services are expected to begin at the new site early 2008.

In the arena of fund raising, and again with great leadership from Board member Colleen Blake, we hosted our second Community Connections gala dinner and auction. With great auctioneering once again from Bob Drewel (former Snohomish County Executive and Executive Director of the Puget Sound Regional Council) and Bob Watt (Vice President for Government Affairs at the Boeing Company), the event raised over \$85,000. This year's event will be held the evening of March 7th, and for the first time will be held at the Lynnwood Convention Center.

Finally, the Board adopted a new strategic plan to guide CHS for the next three years. This planning effort was led by Rachel Klausner, a new Board member, and our Social Ventures Lead Partner. Bruce Titcomb, a Board member for the past four years, will be taking over as Board President and will lead us through the challenges ahead this next year. Bruce is the Principal at Ridgecrest Elementary in Shoreline and is a passionate supporter of our programs and CHS. Welcome, Bruce!

Of course, we want to thank all of you who have supported CHS through the donation of money and time, and by spreading the word about the value we bring to the community. CHS depends on your support for our continued success.



Best wishes for a wonderful 2008!

Nick Pealy
CHS Board President

Beratta Gomillion
CHS Executive Director

CHS At A GLANCE

Fiscal Year 06-07

This is what we did. . .

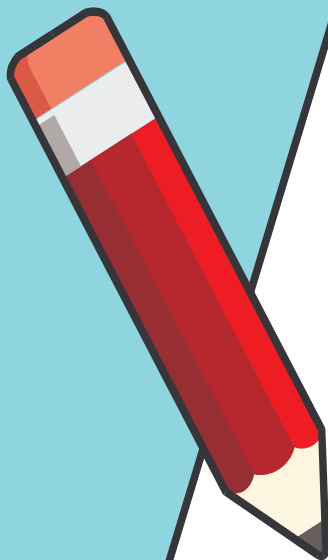
- ❖ 1,532 people attended activities at our 3 Family Support Centers
- ❖ 273 people received 5,195 total hours of family counseling
- ❖ 502 people received 14,499 substance abuse treatment services
- ❖ 3500 youth participated in the 'Partners in Prevention' program
- ❖ CHS was one of eight sites nationally selected to participate in the Supporting Healthy Marriage Project, thus, the creation of our Loving Families Program

. . . and much more!

FOR WHOM

51% Female
46% people of color
49% under 18 years old
70% very low or low income

This is why....



REPORT CARD

Name: **Center for Human Services**

Reporting Period- July 1, 2006-June 30, 2007

Family Support

84% of participants developed relationships with peers and established informal social networks (protective factors for preventing child abuse and neglect.)

97% of participants in 'English Language Learner' classes improved their reading, speaking and writing English skills.

Family Counseling

80% of youth showed progress meeting their treatment goals and exhibited improved mood, emotional functioning, and/or ability to positively engage with family and others.

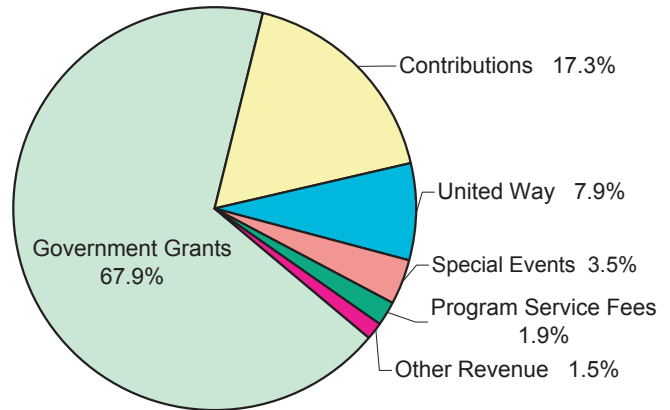
Substance Abuse

Over 55% of adult clients who were admitted to treatment, completed treatment compared to the statewide average of 45%. Over 70% of youth completed treatment compared to a statewide average of 43%.

FINANCIAL REPORT - July 1, 2006 through June 30, 2007

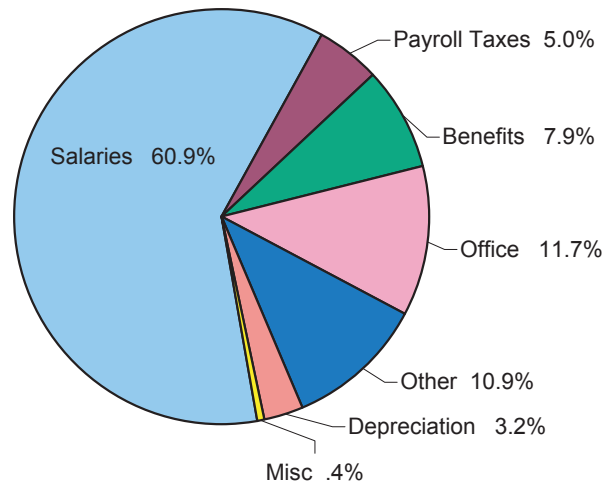
Revenue

Government Grants	\$ 1,607,346
Contributions	409,271
United Way	186,183
Special Events	83,291
Program Service Fees	46,175
Other Revenue	34,904
Total Revenue & Support	\$ 2,367,170



Expenses

Salaries	\$ 1,367,443
Payroll Taxes	112,887
Benefits	176,939
Office Expenses	
Occupancy	107,103
Supplies	90,379
Repairs & Maintenance	36,938
Postage & Printing	16,655
Communication	11,882
Other Expenses	
Professional Services	154,929
Insurance	20,608
Program Events	22,689
Travel	12,627
Training/Conferences	33,042
Depreciation	70,981
Miscellaneous Expenses	10,125
Total Expenses	\$ 2,245,227



Statement of Financial Position

Assets

Current Assets	
Cash	\$ 389,772
Contracts Receivable	380,158
United Way promises to give	13,940
Prepaid Expense	31,345
Property and Equipment, net	2,014,526
Other Assets	74,680
Total Assets	\$ 2,904,421

Liabilities and Net Assets

Current Liabilities	
Accounts Payable	\$ 39,307
Accrued Liabilities	212,092
Current portions of long-term obligations	499,053
Mortgages, less current portion	1,248,546
Total Liabilities	1,998,998
Net Assets	905,423
Total Liabilities and Net Assets	\$ 2,904,421

2007 Award Winners

Grace Cole Award for Volunteer of the Year: Rachel Klausner
Dorrit Pealy Awards for Outstanding Support: Rob Beem (Individual)
Kirlin Foundation: (Organization)

CHS Locations

**Ballinger Homes
Family Support Center**
2200 NE 201st Pl
Shoreline, WA 98155
Phone: 206-362-2842

Center for Human Services
17018 15th Ave NE
Shoreline, WA 98155
Phone: 206-362-7282
Fax: 206-362-7152

Northshore Family Center
18414 103rd Ave NE
Bothell, WA 98011
Phone: 425-205-2004

Web: www.chs-nw.org • Email: admin@chs-nw.org

2007 Board of Directors

OFFICERS

President
Nick Pealy
Secretary
Colleen Blake
Treasurer
Bruce Titcomb
Past President
Matthew Fairfax

DIRECTORS EMERITUS

Ruth Kagi
Shaunta Hyde
Kevin Grossman

MEMBERS

Ndidi Adams
Alice Burgess
Ann Caiola
Michele Carron
Linda Cufley
Matthew Fairfax
Karen Fernandez
Janet Grimley
Kathy Hauck
Lori Knuckey
Marjorie Ledell

Pam Matiko
Carol Mitzoguchi
Steve Ohlenkamp
Patricia Penn
Scott Saunders
Dr. Elizabeth Thomas
Lois Trickey
Marilynn Westerman
Preston Woo
Beratta Gomillion,
Executive Director



„BUILDING A STRONGER COMMUNITY...ONE FAMILY AT A TIME“

CENTER FOR HUMAN SERVICES
17018-15th AVENUE, N.E.
SHORELINE, WA 98155

